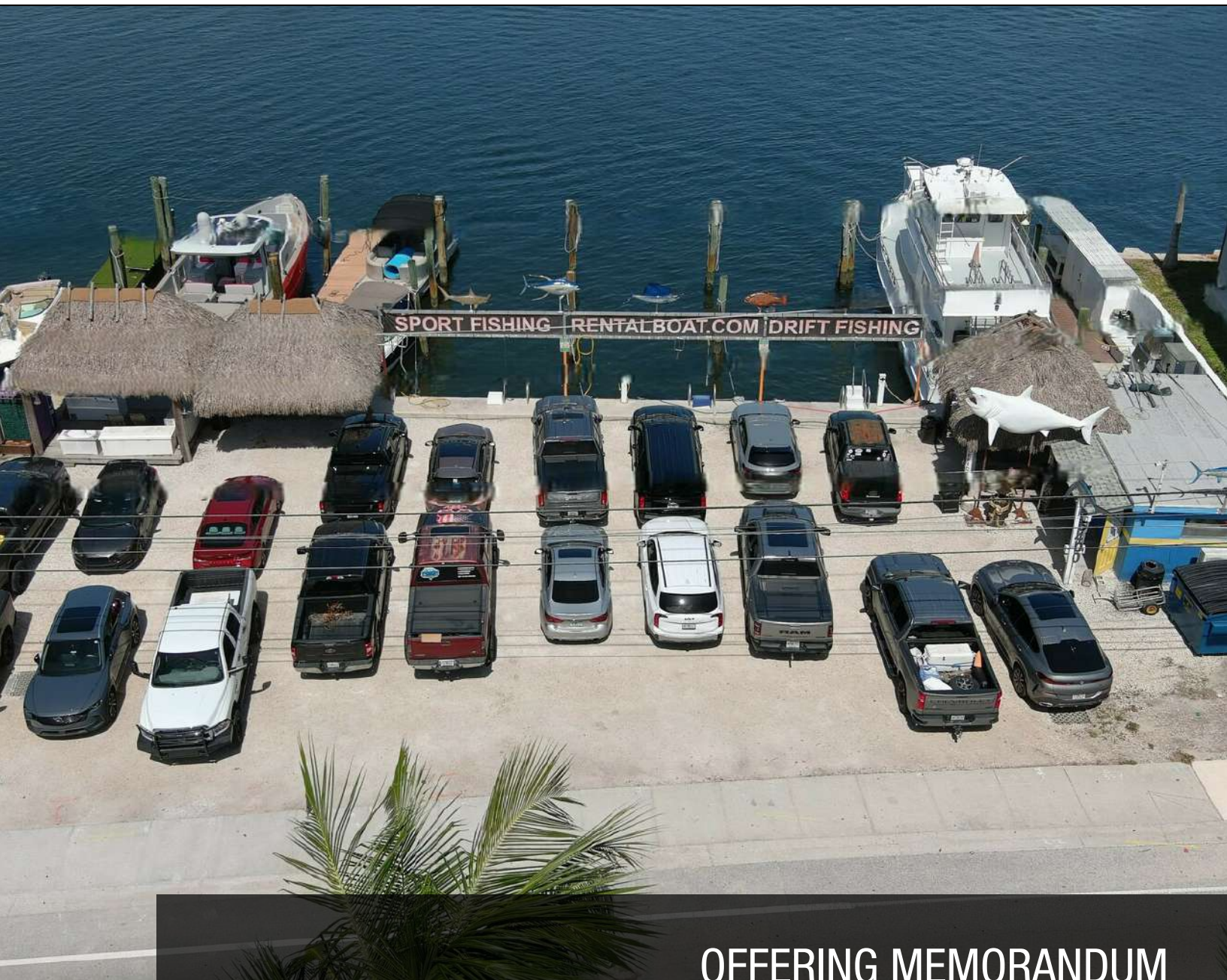


# HOLLYWOOD MARINA

HOLLYWOOD, FL



## OFFERING MEMORANDUM

*PRESENTED BY:*

**KW COMMERCIAL**  
2424 N Federal Highway, Suite 150  
Boca Raton, FL 33431

**RICK ROUGHEN**  
Broker Associate  
O: 954.298.7703  
rick@roughen.net

# Table Of Contents

## TABLE OF CONTENTS

HOLLYWOOD MARINA	<b>1</b>
PROPERTY INFORMATION	<b>3</b>
PROPERTY SUMMARY	<b>4</b>
PROFESSIONAL CHARTER FLEET	<b>5</b>
M/V LADY PAMELA	<b>6</b>
M/V LOIS ANN	<b>7</b>
M/V LADY PAMELA II	<b>8</b>
RENTAL BOATS INCLUDED	<b>9</b>
DOCKSIDE AMENITIES	<b>10</b>
APPROXIMATE PROPERTY BOUNDARY	<b>11</b>
SURVEY	<b>12</b>
ADDITIONAL ADJACENT PARCEL AVAIL AT §	<b>13</b>
REGIONAL MAP	<b>14</b>
LOCATION MAP	<b>15</b>
AERIAL MAP	<b>16</b>
DEMOGRAPHICS	<b>17</b>
DEMOGRAPHICS MAP & REPORT	<b>18</b>

## CONFIDENTIALITY & DISCLAIMER

All materials and information received or derived from Rick Roughen - KW - National Marina Sales its directors, officers, agents, advisors, affiliates and/or any third party sources are provided without representation or warranty as to completeness, veracity, or accuracy, condition of the property, compliance or lack of compliance with applicable governmental requirements, developability or suitability, financial performance of the property, projected financial performance of the property for any party's intended use or any and all other matters.

Neither Rick Roughen - KW - National Marina Sales its directors, officers, agents, advisors, or affiliates makes any representation or warranty, express or implied, as to accuracy or completeness of the any materials or information provided, derived, or received. Materials and information from any source, whether written or verbal, that may be furnished for review are not a substitute for a party's active conduct of its own due diligence to determine these and other matters of significance to such party. Rick Roughen - KW - National Marina Sales will not investigate or verify any such matters or conduct due diligence for a party unless otherwise agreed in writing.

EACH PARTY SHALL CONDUCT ITS OWN INDEPENDENT INVESTIGATION AND DUE DILIGENCE.

Any party contemplating or under contract or in escrow for a transaction is urged to verify all information and to conduct their own inspections and investigations including through appropriate third party independent professionals selected by such party. All financial data should be verified by the party including by obtaining and reading applicable documents and reports and consulting appropriate independent professionals. Rick Roughen - KW - National Marina Sales makes no warranties and/or representations regarding the veracity, completeness, or relevance of any financial data or assumptions. Rick Roughen - KW - National Marina Sales does not serve as a financial advisor to any party regarding any proposed transaction. All data and assumptions regarding financial performance, including that used for financial modeling purposes, may differ from actual data or performance. Any estimates of market rents and/or projected rents that may be provided to a party do not necessarily mean that rents can be established at or increased to that level. Parties must evaluate any applicable contractual and governmental limitations as well as market conditions, vacancy factors and other issues in order to determine rents from or for the property.

Legal questions should be discussed by the party with an attorney. Tax questions should be discussed by the party with a certified public accountant or tax attorney. Title questions should be discussed by the party with a title officer or attorney. Questions regarding the condition of the property and whether the property complies with applicable governmental requirements should be discussed by the party with appropriate engineers, architects, contractors, other consultants and governmental agencies. All properties and services are marketed by Rick Roughen - KW - National Marina Sales in compliance with all applicable fair housing and equal opportunity laws.



HOLLYWOD MARINA

# PROPERTY INFORMATION

1

PROPERTY SUMMARY

PROFESSIONAL CHARTER FLEET

M/V LADY PAMELA

M/V LOIS ANN

M/V LADY PAMELA II

RENTAL BOATS INCLUDED

DOCKSIDE AMENITIES

APPROXIMATE PROPERTY BOUNDARY

SURVEY

ADDITIONAL ADJACENT PARCEL AVAIL AT \$2.995 MM

REGIONAL MAP

LOCATION MAP

AERIAL MAP



# PROPERTY SUMMARY



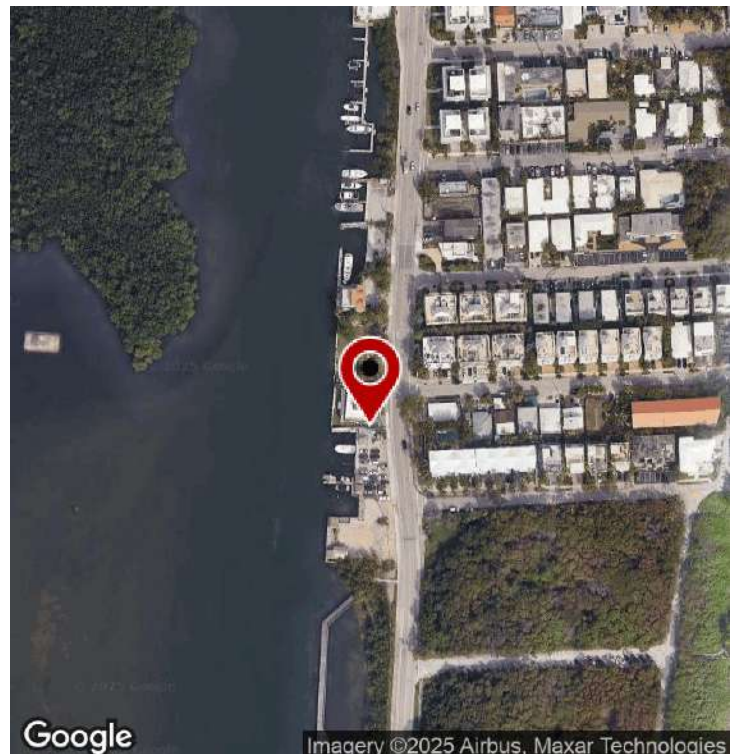
## PROPERTY DESCRIPTION

Price: \$5,745,000.00

This marina is located in Hollywood Florida, just south of the City of Fort Lauderdale and only minutes from Port Everglades ( a major cruiseline and deep-water inlet). The facility lies on the western bank of Hollywood Beach, and on the eastern side of the Intracoastal waterway. An impressive fleet of very successful charter boats line the docks and provide legendary fishing excursions into Florida's Gulf Stream waters. Staff maintains the front desk, while licensed and experienced captains run the boats. Tiki huts provide shaded areas for customers prior to and after trips where stories and photos are exchanged, and while captains filet the catch.

## PROPERTY HIGHLIGHTS

- Located in the Yachting Capital of the World, with no height restrictions (bridge goes up), and only 3 miles north to the nearest deep water inlet, there is plenty of draft at the bulkhead. With full service shipyards in immediate proximity, and ownership in fee on the land with riparian rights in the water, there is excellent protection from storms, ample parking for customers, and only a five-minute walk directly east to the beach with local restaurants abounding. Fort Lauderdale International Airport only 10 minutes by car, the Bahamas are a short 55 mile run due east, and Miami only 25 miles directly to the South. There is an option to purchase an additional parcel which shares the southern property line with this property and that would extend the waterfront to a total of at least 150 feet. Perfect for a very large yacht to lay up alongside and have a private location to store their goods, maintain the vessel and more.
- This highly unique business / personal use property is rare indeed, and available for its next owner to use as they see fit. With at least 110' of bulkhead running north and south on the west side of the property, options including the continuation of what is taking place there now, or a complete re-purposing of the facility.



Google

Imagery ©2025 Airbus, Maxar Technologies





## PROFESSIONAL CHARTER FLEET





## M/V LADY PAMELA



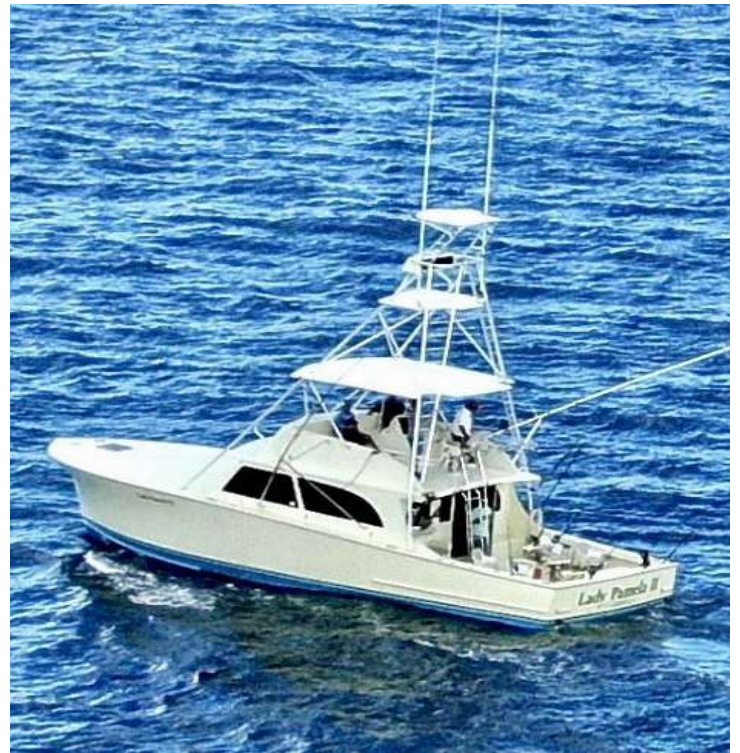


## M/V LOIS ANN





## M/V LADY PAMELA II



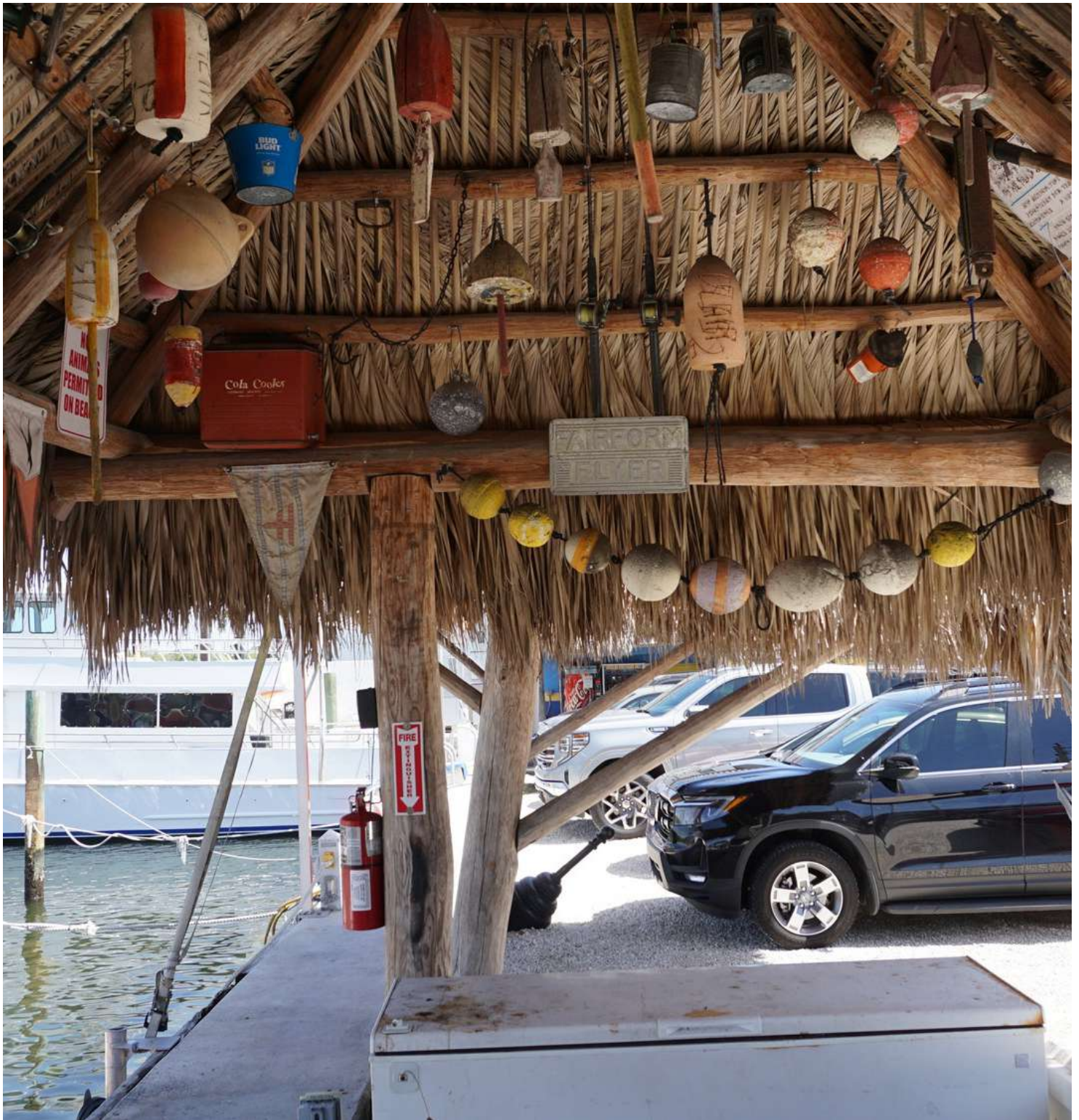


## RENTAL BOATS INCLUDED



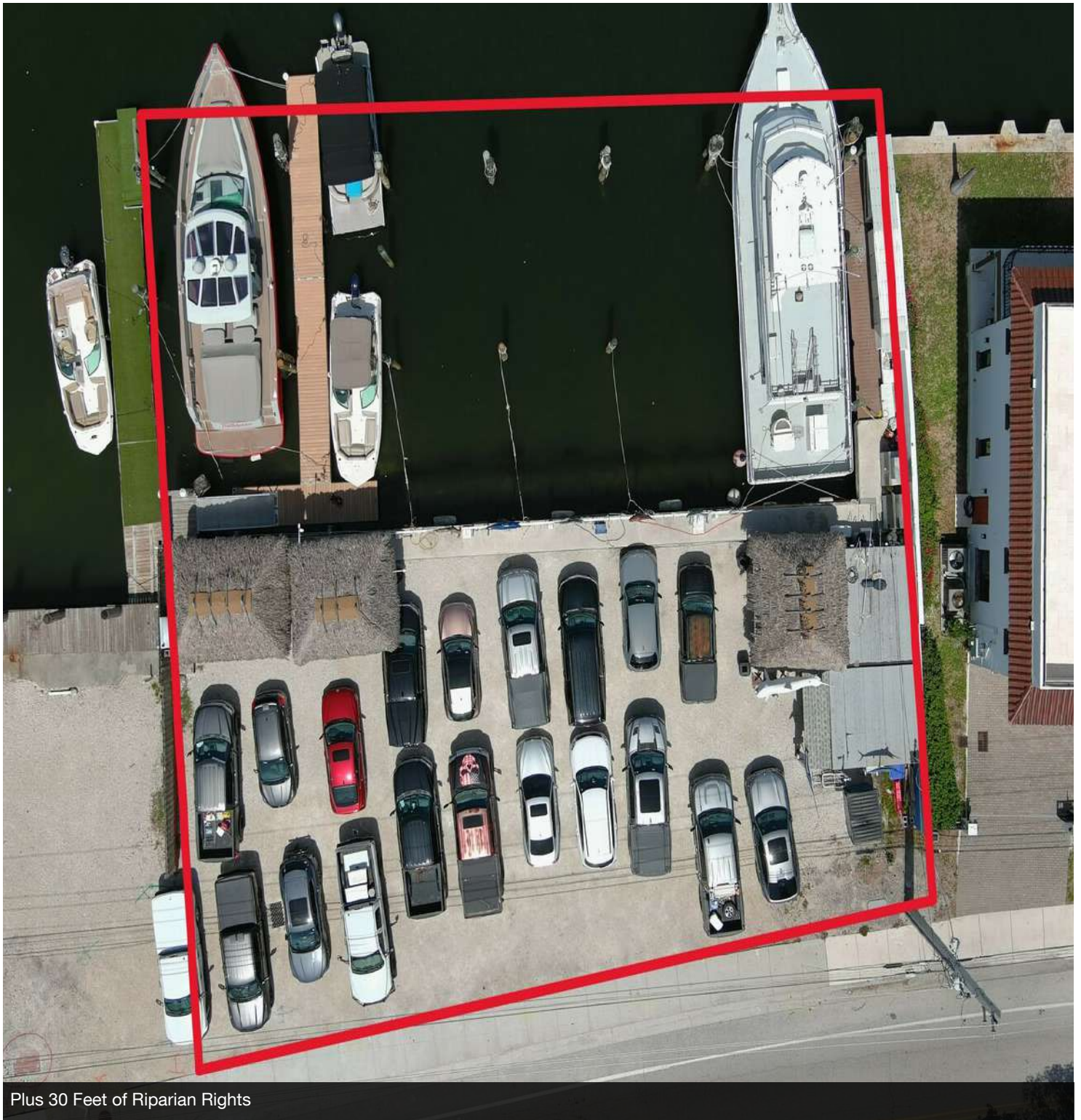


## DOCKSIDE





## APPROXIMATE PROPERTY BOUNDARY



Plus 30 Feet of Riparian Rights



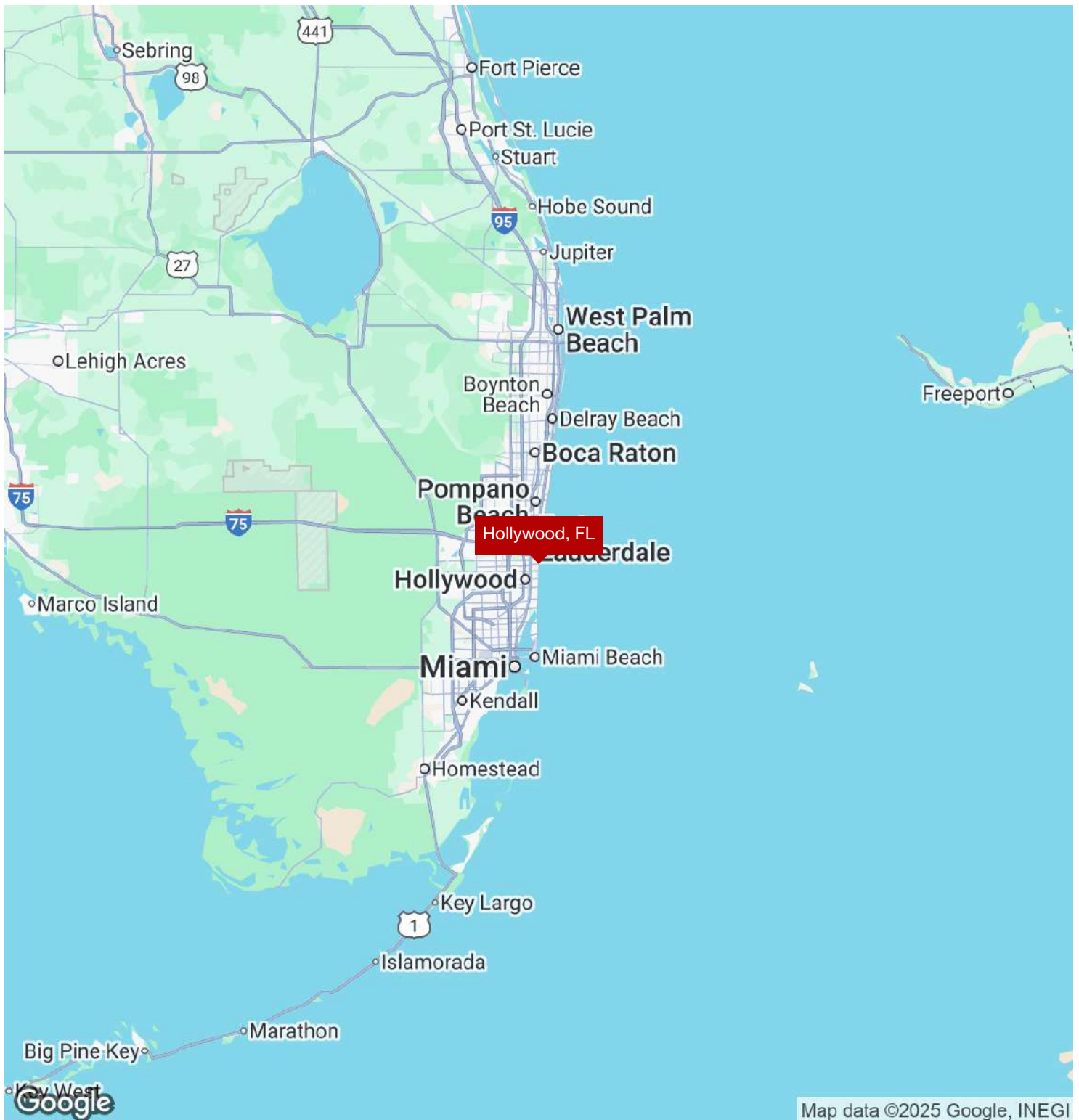
[illegible]



## ADDITIONAL ADJACENT PARCEL AVAIL AT \$2.995 MM



## REGIONAL MAP

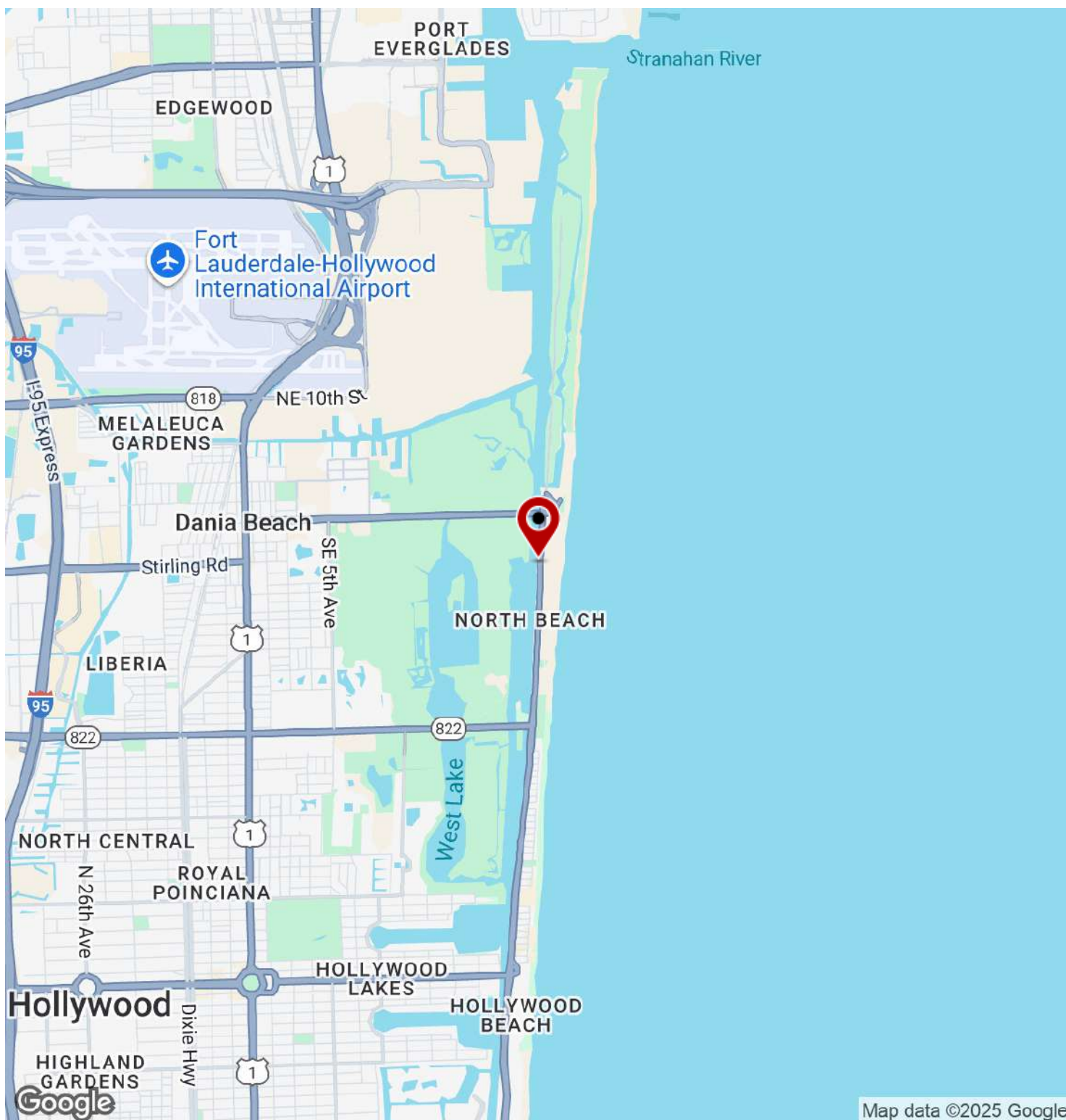


Map data ©2025 Google, INEGI

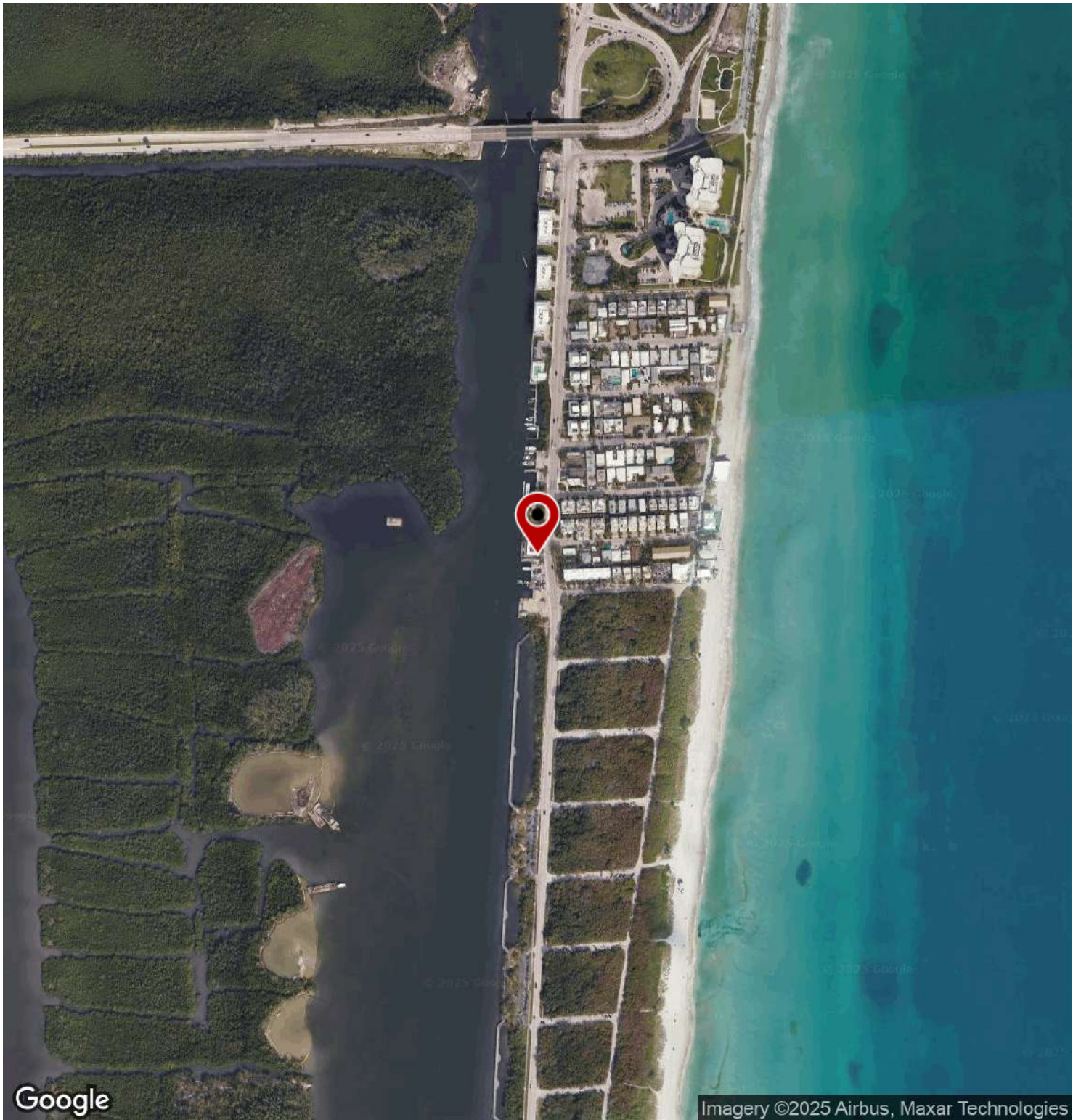




# LOCATION MAP



## AERIAL MAP



Google

Imagery ©2025 Airbus, Maxar Technologies





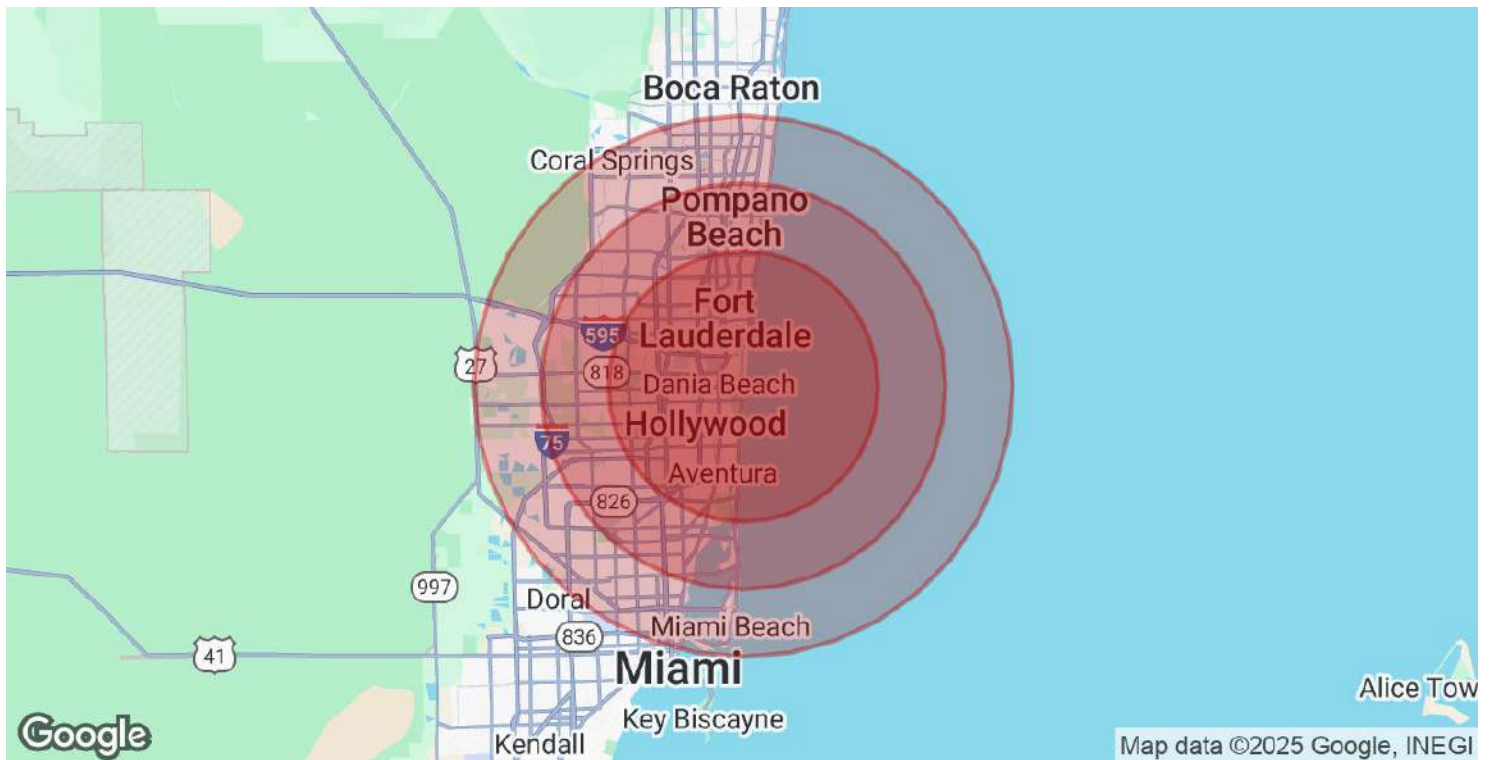
HOLLYWOD MARINA

# DEMOGRAPHICS

# 2

DEMOGRAPHICS MAP & REPORT

# Demographics Map & Report



## POPULATION

	10 MILES	15 MILES	20 MILES
Total Population	926,573	2,004,830	3,089,279
Average Age	42	42	42
Average Age (Male)	41	41	41
Average Age (Female)	43	43	43

## HOUSEHOLDS & INCOME

	10 MILES	15 MILES	20 MILES
Total Households	372,645	783,615	1,179,374
# of Persons per HH	2.5	2.6	2.6
Average HH Income	\$96,155	\$93,904	\$96,561
Average House Value	\$468,611	\$452,010	\$463,427

Demographics data derived from AlphaMap

