

# MARINA SHORES AT DUNE HARBOR

PORTAGE, IN



## OFFERING MEMORANDUM

2025

Marina Shores at  
Dune Harbor

Information contained herein was obtained from sources believed to be reliable. However, such reliability has not been verified with regards to its accuracy, and as such, we make no guarantee, warranty or representation about it. Such information is made available herein subject to the possibility of errors, omissions, changes of price, rental or other conditions, prior sale, lease or financing, or withdrawal without notice. Also included may be projections, opinions, assumptions or estimates intended for example only, and may not be relied upon to accurately represent the current or future condition or performance of the business or the property. Interested buyers and their tax and legal advisors should conduct their own investigation of the business and the property before making any decisions regarding a potential acquisition or taking any other financial actions regarding the marina.

# CONFIDENTIALITY & DISCLAIMER

## CONFIDENTIALITY & DISCLAIMER

All materials and information received or derived from Jennifer Stein Real Estate, Inc ("JSRE") and Out of State Cooperating Broker Richard H. Roughen PA - Keller Williams Realty Services of Boca Raton - dba National Marina Sales and its directors, officers, agents, advisors, affiliates and/or any third party sources are provided without representation or warranty as to completeness, veracity, accuracy, condition of the property, compliance or lack of compliance with applicable governmental requirements, developability or suitability, financial performance of the property, projected financial performance of the property for any party's intended use or any and all other matters.

Neither Jennifer Stein Real Estate, Inc ("JSRE"), Out of State Cooperating Broker Richard H. Roughen PA - Keller Williams Realty Services of Boca Raton - dba National Marina Sales nor its directors, officers, agents, advisors, or affiliates makes any representation or warranty, express or implied, as to accuracy or completeness of the any materials or information provided, derived, or received. Materials and information from any source, whether written or verbal, that may be furnished for review are not a substitute for a party's active conduct of its own due diligence to determine these and other matters of significance to such party. Jennifer Stein Real Estate, Inc ("JSRE") and Out of State Cooperating Broker Richard H. Roughen PA - Keller Williams Realty Services of Boca Raton - dba National Marina Sales will not investigate or verify any such matters or conduct due diligence for a party unless otherwise agreed in writing.

EACH PARTY SHALL CONDUCT ITS OWN INDEPENDENT INVESTIGATION AND DUE DILIGENCE.

Any party contemplating or under contract or in escrow for a transaction is urged to verify all information and to conduct their own inspections and investigations including through appropriate third party independent professionals selected by such party. All financial data should be verified by the party including by obtaining and reading applicable documents and reports and consulting appropriate independent professionals. Jennifer Stein Real Estate, Inc ("JSRE") and Out of State Cooperating Broker Richard H. Roughen PA - Keller Williams Realty Services of Boca Raton - dba National Marina Sales make no warranties and/or representations regarding the veracity, completeness, or relevance of any financial data or assumptions. Jennifer Stein Real Estate, Inc ("JSRE") and Out of State Cooperating Broker Richard H. Roughen PA - Keller Williams Realty Services of Boca Raton - dba National Marina Sales do not serve as a financial advisor to any party regarding any proposed transaction. All data and assumptions regarding financial performance, including that used for financial modeling purposes, may differ from actual data or performance. Any estimates of market rents and/or projected rents that may be provided to a party do not necessarily mean that rents can be established at or increased to that level. Parties must evaluate any applicable contractual and governmental limitations as well as market conditions, vacancy factors and other issues in order to determine rents from or for the property.

Legal questions should be discussed by the party with an attorney. Tax questions should be discussed by the party with a certified public accountant or tax attorney. Title questions should be discussed by the party with a title officer or attorney. Questions regarding the condition of the property and whether the property complies with applicable governmental requirements should be discussed by the party with appropriate engineers, architects, contractors, other consultants and governmental agencies. All properties and services are marketed by Jennifer Stein Real Estate, Inc ("JSRE") and Out of State Cooperating Broker Richard H. Roughen PA - Keller Williams Realty Services of Boca Raton - dba National Marina Sales in compliance with all applicable fair housing and equal opportunity laws.

**Jennifer Stein Real Estate, Inc.**

## TABLE OF CONTENTS

PROPERTY INFORMATION	3
LOCATION INFORMATION	10
DEMOGRAPHICS	14

### Presented By:

**Listing Broker**  
**Jennifer Stein**  
**Jennifer Stein Real Estate, Inc.**  
**IN Lic. No RC52100277**  
**jstein@jenniferstein-**  
**realestate.com**  
**(800) 437-9956**

**Out of State Cooperating Broker**  
**Richard H Roughen PA**  
**Keller Williams Realty Services**  
**dba 'National Marina Sales'**  
**FL Lic. No. BK706569**  
**Rick@Roughen.net**  
**(954) 298-7703**

MARINA SHORES AT DUNE HARBOR

# PROPERTY INFORMATION

1

PROPERTY DESCRIPTION

PROPERTY SUMMARY

PROTECTED BASIN / PRIVATE ENTRANCE / FLOATING DOCKS

ACCESS TO LAKE MICHIGAN

SHIPS STORE, FUEL DOCK, & REAL ESTATE (OWNED IN FEE)

BOATER ACCESS TO YACHT CLUB AND AMENITIES



## PROPERTY DESCRIPTION



### PROPERTY DESCRIPTION

For Sale - The Marina Basin (water and submerged lands - approx. 17 acres) and the Marina Store, Offices and Cleaning Station (including the underlying real estate, all owned in fee) located on North side next to the fuel dock where entering the basin. Parking is located on the north side of the basin and is shared with the residents at the development. Buyer is purchasing all of the floating docks, the pedestals, the ramps, the pilings and all other assets attached to and/or resting upon the floating docks that are not owned by customers or other third parties.

This Marina is located approximately 30 miles southeast of Chicago and is situated on the south end of Lake Michigan in its own protected harbor. Adjacent multi-family housing development continues to be added to the overall development providing more and more customers and enhanced appeal to the boating public. In addition to boat docks, there is continuing expansion of the PWC demand for storage along with increasing fuel sales.

An Association manages the overall property and will collect fees for customer use of public areas. Currently the Yacht Club Restaurant, Bars, and Fitness Center are operated by a 3rd party who is committed to the continual improvement, upgrade, and profitability of the facility which contributes greatly to the ambiance and enjoyment of boating customers. The Restaurant, Bars, and Fitness Center are a major draw for those who love the waterfront.

The (approx.) 267 floating wet slips (accommodating vessels up to 50 feet) and (approx.) 57 Jet Ski slips are loaded with amenities and are in excellent condition. Customers enjoy adjacent parking to the boardwalk along the waterfront.

Jennifer Stein Real  
Estate, Inc.

## PROPERTY SUMMARY



### PROPERTY SUMMARY

Marketed in the past to include all of the multi-family development uplands, this acquisition opportunity is now presented to include only the marina component which includes the entire basin along with the Boat House, fuel docks, and cleaning station.

- Marina Basin and Waterway - approximately 17-acres
- Lot 86 - Harbor Office/Ships Store & Offices - approximately .27 acres

### OFFERING SUMMARY

Sale Price: \$4,950,000.00

DEMOGRAPHICS	10 MILES	20 MILES	30 MILES
Total Households	81,321	319,012	998,919
Total Population	177,645	739,322	2,239,398
Average HH Income	\$60,096	\$67,974	\$66,832

Jennifer Stein Real  
Estate, Inc.



## PROTECTED BASIN / PRIVATE ENTRANCE / FLOATING DOCKS



Jennifer Stein Real  
Estate, Inc.



## ACCESS TO LAKE MICHIGAN



Jennifer Stein Real  
Estate, Inc.



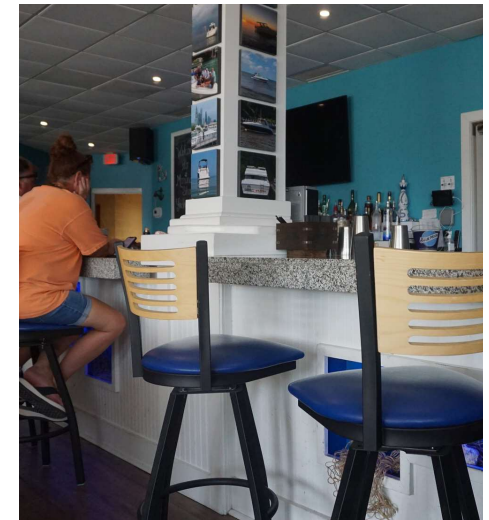
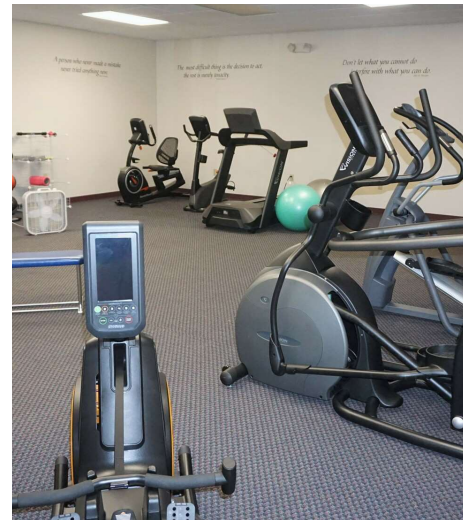
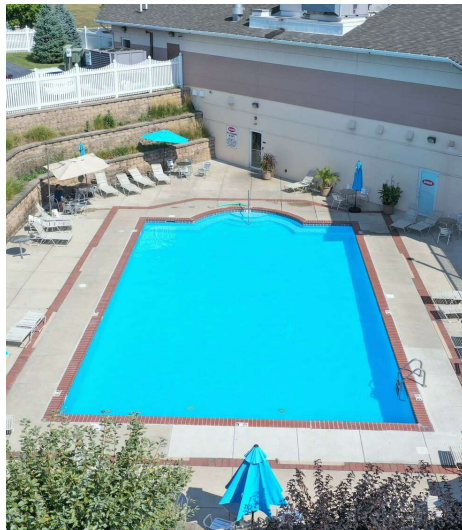
## SHIPS STORE, FUEL DOCK, & ALL SUBMERGED LANDS (OWNED IN FEE)



Jennifer Stein Real  
Estate, Inc.



## BOATER ACCESS TO YACHT CLUB AND AMENITIES



Jennifer Stein Real  
Estate, Inc.

MARINA SHORES AT DUNE HARBOR

# LOCATION INFORMATION

# 2

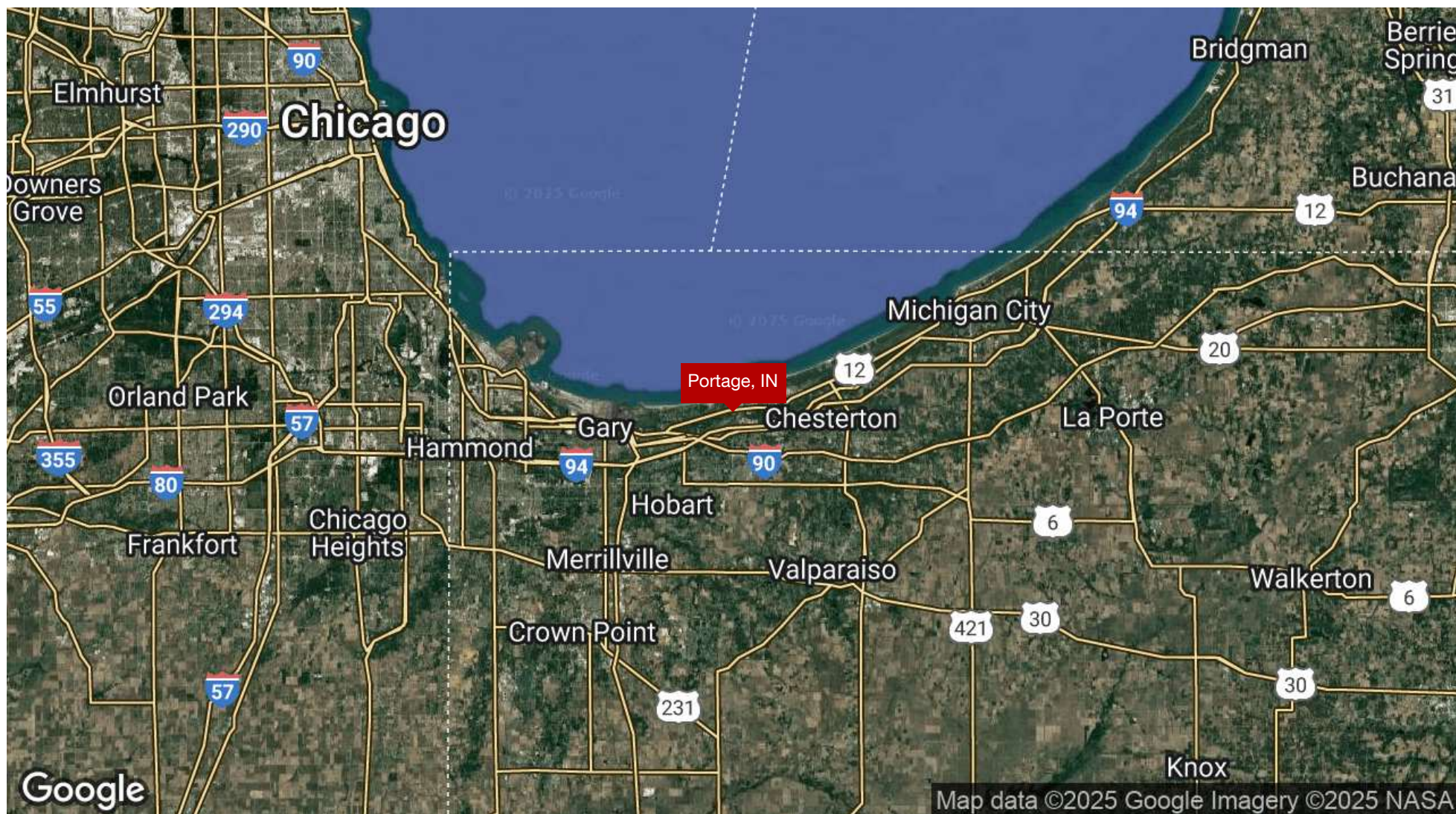
REGIONAL MAP

AERIAL MAP

LOCATION MAP



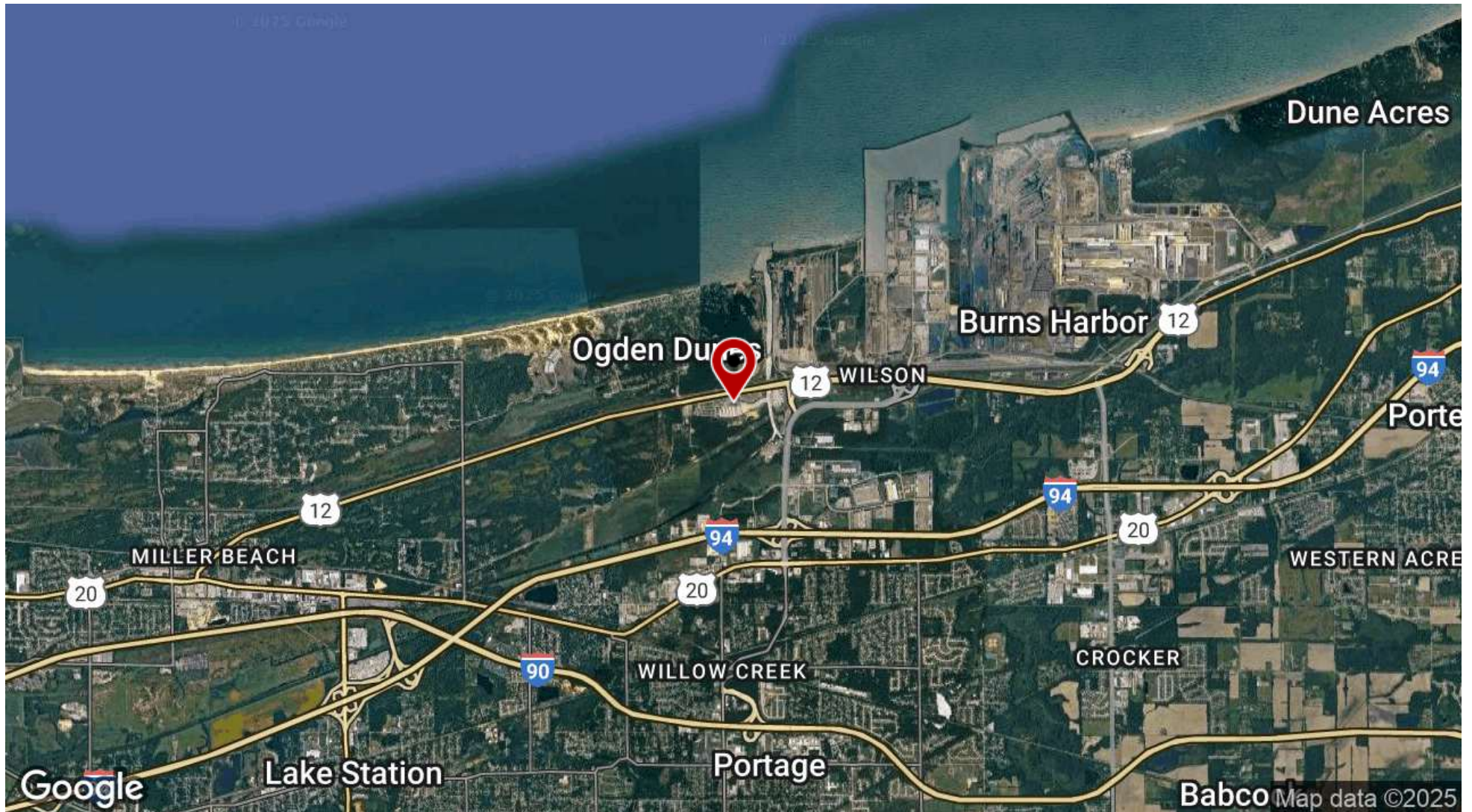
## REGIONAL MAP



Jennifer Stein Real  
Estate, Inc.



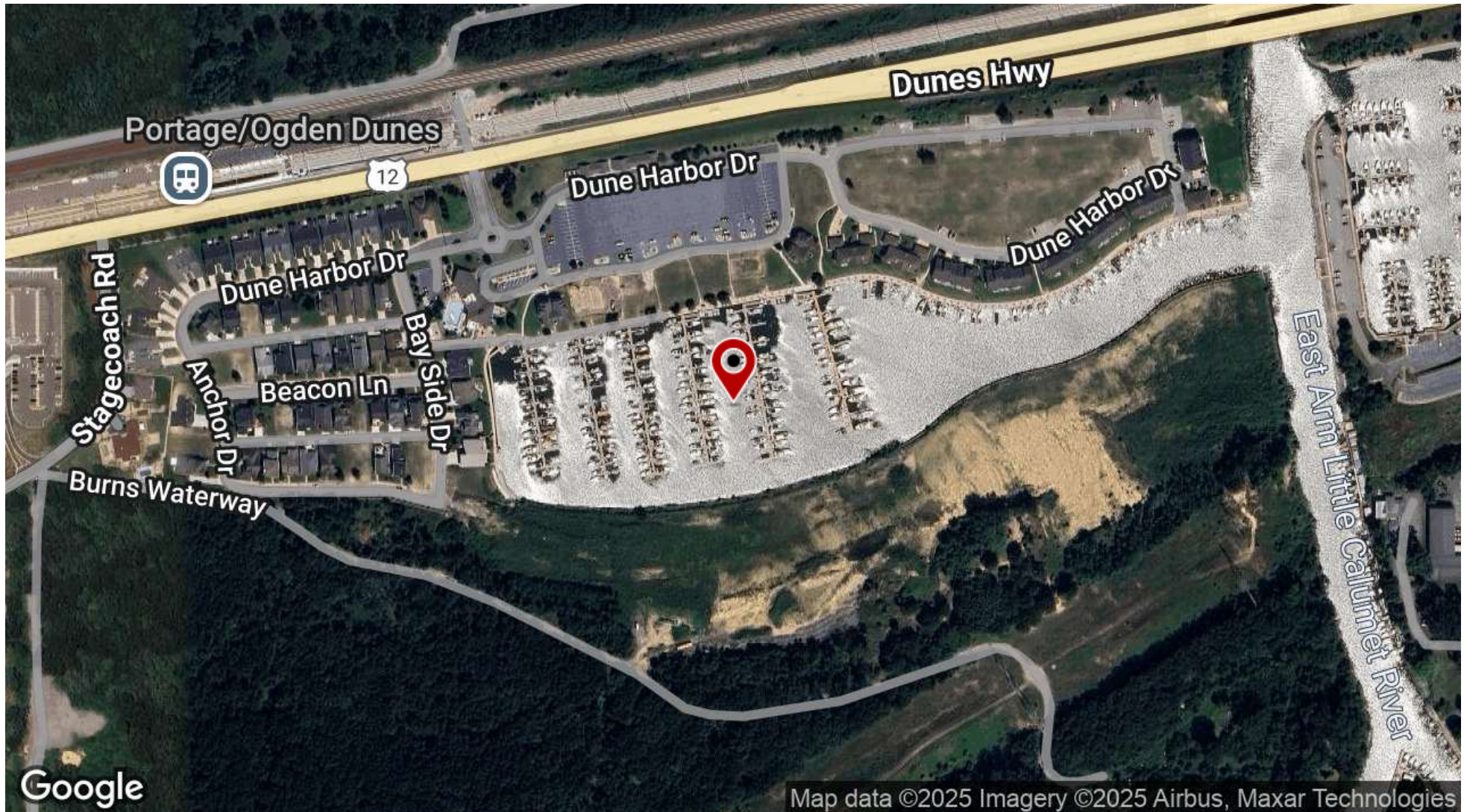
## AERIAL MAP



Jennifer Stein Real  
Estate, Inc.



## LOCATION MAP



Jennifer Stein Real  
Estate, Inc.

MARINA SHORES AT DUNE HARBOR

# DEMOGRAPHICS

3

DEMOGRAPHICS MAP & REPORT



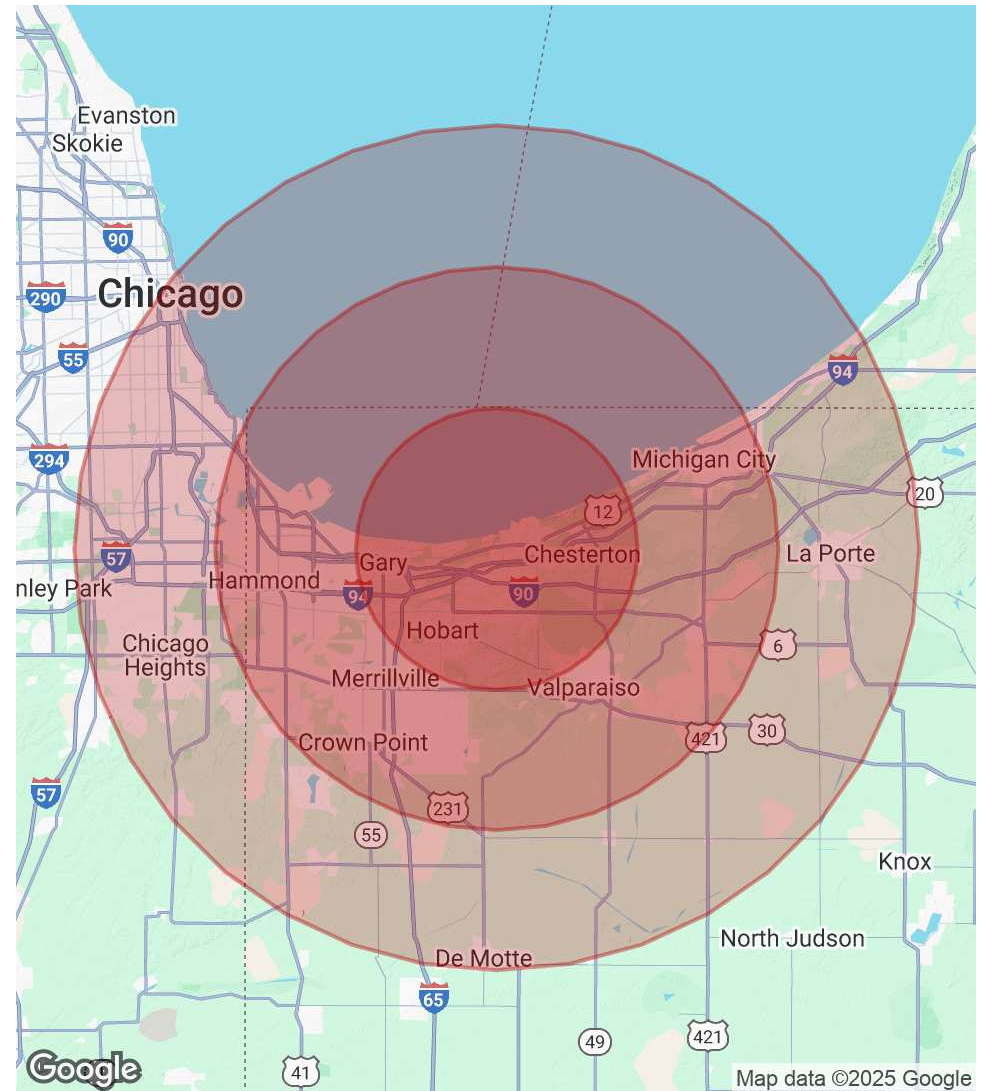
## DEMOGRAPHICS MAP & REPORT

POPULATION	10 MILES	20 MILES	30 MILES
Total Population	177,645	739,322	2,239,398
Average Age	39.4	39.8	38.6
Average Age (Male)	37.0	37.9	36.6
Average Age (Female)	41.0	41.0	40.3

HOUSEHOLDS & INCOME	10 MILES	20 MILES	30 MILES
Total Households	81,321	319,012	998,919
# of Persons per HH	2.2	2.3	2.2
Average HH Income	\$60,096	\$67,974	\$66,832
Average House Value	\$146,597	\$158,099	\$182,783

2020 American Community Survey (ACS)



Jennifer Stein Real  
Estate, Inc.